

# BRAND NEW TRIM CLIP WORKSHOP KIT

THE  
CONSUMABLES  
SOLUTION

A comprehensive range  
of trim clip essentials  
designed for use in  
a typical bodyshop  
environment

Complete kit Contains:

- Blue Storage Bins
- Louvred Panel
- Part Number Bin Labels
- 36 packs of Trim Clips  
(Turn over for full list and details)

PART  
NUMBER **110500**



**FREE**

Trim Clip  
Remover Set

With every workshop  
kit purchased

 **RGTOOLS**



**TURN OVER  
FOR FULL  
CONTENTS**



# TRIM CLIP WORKSHOP KIT CONTENTS

1 Louvred Panel, 36 Storage Bins & labels, 36 pack of Trim Clips

1 Additional Louvred Panel and 4 Additional Storage Bins also supplied

TRIM LOCKING NUT

**TRIM LOCKING NUT TO SUIT  
AUDI, SEAT, SKODA & VW**  
Head Diameter: 12mm,  
Length: 12.5mm,  
Fits Hole Size: 8mm



Part No.	Pack of
975701	25

**STORAGE BINS - BLUE**

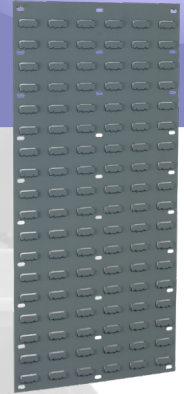
Sturdy Polypropylene  
Width: 100 mm. Height: 75 mm  
Depth: 165 mm



Part No.	Pack of
895305	40

**LOUVRED PANEL - GREY**

Epoxy Powder Coated Steel  
Double Indented for extra strength  
Width: 457 mm. Height: 946 mm



Part No.	Pack of
895291	2

MOULDING CLIPS

**MOULDING CLIP TO SUIT PSA**

Head: 17.16mm x 11.78mm,  
Length: 12.53mm,  
Fits Hole Size: 9.0mm



Part No.	Pack of
975461	25

**MOULDING CLIP TO SUIT  
HYUNDAI**

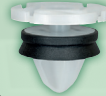
Head: 19.92 x 13.90mm,  
Length: 10.25mm,  
Fits Hole Size: 9.0mm



Part No.	Pack of
975503	25

**PANEL CLIP TO SUIT RENAULT**

Head: (bottom head) 17.25mm,  
Length: 12.40mm,  
Fits Hole Size: 10.5mm



Part No.	Pack of
975780	25

**PANEL CLIP TO SUIT AUDI,  
SEAT, SKODA & VW**

Head: 22.70mm,  
Length: 12.25mm,  
Fits Hole Size: 7.8mm



Part No.	Pack of
975781	25

**PANEL CLIP TO SUIT  
VAG / FORD**

Head: 17.39mm,  
Length: 16.0mm,  
Fits Hole Size: 8.0mm



Part No.	Pack of
975782	25

MOULDING CLIPS

DRIVE RIVETS

**DRIVE RIVET TO SUIT AUDI,  
SEAT, SKODA, VW,  
OPEL / GM, RENAULT**

Head: 9.8mm, Length: 11.5mm,  
Fits Hole Size: 6mm



Part No.	Pack of
975531	25

**DRIVE RIVET TO SUIT AUDI,  
SEAT, SKODA, VW, BMW, FORD,  
MERCEDES BENZ, GM / OPEL**

Head: 16mm, Length: 11.5mm,  
Fits Hole Size: 7.8mm



Part No.	Pack of
975535	25

**DRIVE RIVET TO SUIT AUDI,  
SEAT, SKODA, VW, MERCEDES  
BENZ, OPEL / GM**

Head: 13mm, Length: 15mm,  
Fits Hole Size: 7.8mm



Part No.	Pack of
975634	25

**DRIVE RIVET TO SUIT AUDI,  
SEAT, SKODA, VW, BMW,  
CITROEN, PEUGEOT, MERCEDES  
BENZ, RENAULT**

Head: 10mm, Length: 11mm,  
Fits Hole Size: 5mm



Part No.	Pack of
975536	25

**METAL TRIM FASTENER  
TO SUIT AUDI, SEAT,  
SKODA & VW**

Diameter: 30.00mm



Part No.	Pack of
975931	25

FIR TREE FIXINGS

**Fir Tree Fixing to suit  
Ford & PSA**

Head: 18.0mm, Length:  
15.64mm, Fits hole size: 7.0mm



Part No.	Pack of
975432	25

**Fir Tree Fixing to suit Ford**

Head: 18.20mm, Length: 26.91,  
Fits hole size: 6.5mm



Part No.	Pack of
975436	25

**Fir Tree Fixing to suit  
Renault**

Head: 34.55mm, Length:  
22.62mm, Fits hole size: 10.0mm



Part No.	Pack of
975437	25

**Fir Tree Fixing**

Head: 15.92mm, Length:  
14.52mm, Fits hole size: 6.5mm



Part No.	Pack of
975883	25

**METAL TRIM FASTENER TO  
SUIT FORD, AUDI,  
SEAT, SKODA & VW**

Diameter: 29.92mm



Part No.	Pack of
975932	25

METAL TRIM FASTENERS

PUSH RIVETS

**PUSH RIVET TO SUIT  
MITSUBISHI / NISSAN**

Head: 20mm, Length: 13.21mm,  
Fits hole size 7.82mm



Part No.	Pack of
975560	25

**PUSH RIVET TO SUIT  
TOYOTA**

Head: 17.73mm, Length:  
31.04mm, Fits hole size: 8.5mm



Part No.	Pack of
975561	25

**PUSH RIVET TO SUIT  
HONDA**

Head: 19.72mm, Length:  
15.80mm, Fits hole size: 9.7mm



Part No.	Pack of
975563	25

**PUSH RIVET TO SUIT  
BMW / MERCEDES /  
MITSUBISHI / VOLVO**

Head: 20.0mm, Length: 14.0mm,  
Fits hole size: 8.0mm



Part No.	Pack of
975564	25

**PUSH RIVET TO SUIT  
VAG / FORD / RENAULT  
/ GM / OPEL**

Head: 20.20mm, Length:  
20.86mm, Fits hole size: 8.2mm



Part No.	Pack of
975569	25

PUSH RIVETS

**PUSH RIVET TO SUIT  
MERCEDES**

Head: 16.02mm, Length:  
18.3mm, Fits hole size: 6.10mm



Part No.	Pack of
975570	25

**PUSH RIVET TO SUIT  
TOYOTA / PSA**

Head: 20.46mm, Length:  
11.44mm, Fits hole size: 6.5mm



Part No.	Pack of
975976	25

**WEATHERSTRIP CLIP TO  
SUIT HONDA / HYUNDAI**

Head: 9.30mm, Length: 11mm,  
Fits Hole Size: 4.0mm



Part No.	Pack of
975463	25

**WEATHERSTRIP CLIP TO  
SUIT HYUNDAI**

Head: 14.45mm, Length:  
12.60mm, Fits Hole Size: 4mm



Part No.	Pack of
975476	25

**Screw Rivet to suit Ford**

Head: 15.78mm, Length:  
17.58mm, Fits hole size: 6.5mm



Part No.	Pack of
975410	25

**PUSH RIVET TO SUIT  
HONDA**

Head: 19.60mm,  
Length: 9.38mm,  
Fits hole size: 7.69mm



Part No.	Pack of
975983	25

**PUSH RIVET TO SUIT  
PEUGEOT CITROEN**

Head: 20.0mm,  
Length: 13.23mm,  
Fits hole size: 7.5mm



Part No.	Pack of
975984	25

**WEATHERSTRIP CLIP TO  
SUIT CITROEN, PEUGEOT,  
RENAULT**

Head: 17.17 x 8.41mm, Length:  
9.14mm, Fits Hole Size: 4.0mm



Part No.	Pack of
975478	25

**WEATHERSTRIP CLIP TO  
SUIT HONDA**

Head: 14.42mm, Length:  
9.83mm, Fits Hole Size: 4.0mm



Part No.	Pack of
975720	25

**Screw Rivet to suit  
BMW & Honda**

Head: 20.03mm, Length:  
14.12mm, Fits hole size: 9.5mm



Part No.	Pack of
975412	25

**PUSH RIVET TO SUIT PSA /  
NISSAN / TOYOTA**

Head: 17.92mm,  
Length: 13.0mm,  
Fits hole size: 7.8mm



Part No.	Pack of
975990	25

**PUSH RIVET TO SUIT  
FORD / OPEL**

Head: 18.14mm,  
Length: 17.29mm,  
Fits hole size: 7.32mm



Part No.	Pack of
975991	25

**WEATHERSTRIP CLIP  
TO SUIT HONDA**

Head: 14.88mm, Length:  
10.26mm, Fits Hole Size: 4mm



Part No.	Pack of
975721	25

**WEATHERSTRIP CLIP TO  
SUIT HONDA, NISSAN**

Head: 14.91mm, Length:  
13.48mm, Fits Hole Size: 4mm



Part No.	Pack of
975722	25

**Screw Rivet to suit Ford**

Head: 15.58mm, Length:  
22.47mm, Fits hole size: 6.0mm



Part No.	Pack of
975416	25

SCREW RIVETS

Images are NOT actual size, for full range with OEM codes & actual size images see our A1 Trim Clip Chart or product catalogue.